

SERIES 68AAC



70 Shore D



-30°C to +80°C



62mm



250kg

Inverted air cargo castor

- A very strong and durable air cargo castor
- Features an optional demountable foot guard built specifically for use on sorting decks
- The foot guard prevents foot entry into the castor mounting holes on decks and assists in providing a safer, more productive working environment on sortation decks
- Load capacity of 250Kg with a high resistance to shock loads and a long service life
- Precision ball bearings in both wheel and swivel head secure a low rolling and swivelling effort, enabling easy manoeuvring of the freight on loader decks
- Newly developed seals for wheel and fork guarantee maintenance free castors
- To prevent corrosion, the electrolytically zinc plated castor is given an additional yellow passivated coating



Standard cargo castor with ellipse plate



Standard cargo castor with ellipse plate and attached toe guard



Standard cargo castor with six hole rectangular top plate and attached toe guard



Standard cargo castor with six hole rectangular top plate

Available Bore Types



Ball Bearing

Environments of Use

- Weak Acids
- Strong Acids
- Water
- Alcohol
- Weak Bases
- Strong Bases
- Hydrocarbons
- Solvents

Uses

Intended mainly for static uses, for medium-heavy capacities. The excellent rolling resistance ensures that minimum effort is needed in handling, but only on smooth floors.

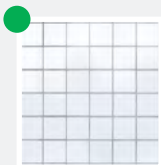
Industries



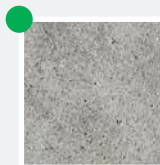
Airport/
Aerospace

Floor Suitability

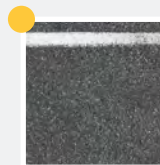
Suitable for tiles and cement-resin. Not recommended on unpaved floors or in the presence of processing residues. They facilitate overcoming small obstacles along the path. They do not mark or damage fragile floors.



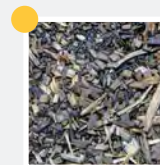
Tile



Cement-Resin



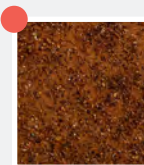
Asphalt



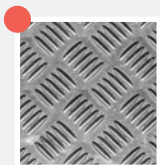
With Chips



With Obstacles



Not Paved



Expanded Metal

For technical help and advice contact

T: 01457 837772 E: sales@aut.co.uk

SERIES 68AAC CONTINUED



70 Shore D



-30°C to +80°C



62mm



250kg

Low wear and shock resistant nylon 6.6 wheel. Even under extremely cold temperatures, our **wheel will withstand excessive impact** and resist chipping, cracking and chunking after continuous use.

The **Water Shield**, designed cap that fits over the rivet, **prevents water from entering the swivel bearing**.

Maintenance free, **sealed precision swivel bearing**, for low rolling effort.

Our **thick top plate** design protects the swivel bearing and provides superior attachment to the deck.

A **metal foil seal** provides the swivel bearing additional protection from harsh elements.



High strength nylon **threadguards** **withstand side impacts and harsh weather conditions**.

Two sealed precision wheel bearings protect against the damaging effects of rain, ice and grime.

Our FEA and computer designing have created a **very strong yoke**, giving it a high rated load.

Our high-strength nylon **dust guard** provides memory - allowing it to **rebound and withstand side impacts** - thus eliminating the denting and the hindered swivel action of conventional steel dust guards.

Precision Ball Bearing

All wheels and swivel raceways have precision ball bearings for better load distribution, strength in side thrust application and ease of mobility.

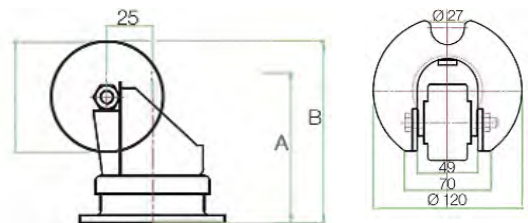
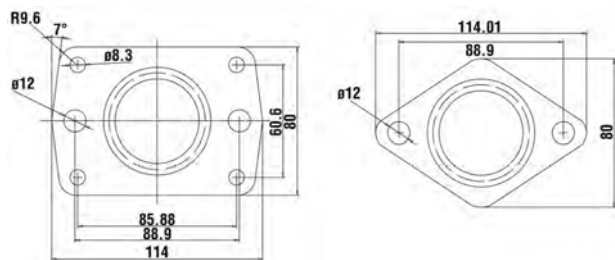
Dust Shield, Water Guard & Threadguard

Prevents wheel and swivel assembly from becoming contaminated.

Finish

Zinc plated to protect against corrosion.

PLATE TYPES



AIR CARGO CASTOR WITH TOP PLATE



				TOP PLATE		STANDARD	STANDARD & ATTACHED TOE GUARD
	62	32	96	01 Diamond	250	68ACC01	68ACC05
	62	32	96	02 Rectangular	250	68ACC02	68ACC06
	62	32	102	01 Diamond	250	68ACC03	68ACC07
	62	32	102	02 Rectangular	250	68ACC04	68ACC08