

SERIES 68FV



80 Shore D



-30°C to +130°C



100 - 125mm



250 - 350kg

Heat resistant nylon wheels

- Polyamide 6 wheel charged with glass fibre to increase resistance to temperature
- Medium duty loads
- Excellent rolling resistance on smooth floors
- Zinc plated (unless described as stainless) pressed steel castor housings
- Tested in accordance with ISO 22878:2004
- Manufactured in accordance with ISO 22883:2004



Available Bore Types



Plain Bore



Ball Bearing



SS Ball Bearing

Environments of Use

- Weak Acids
- Strong Acids
- Water
- Alcohol
- Weak Bases
- Strong Bases
- Hydrocarbons
- Solvents

Uses

Mainly suitable for static uses on smooth and compact flooring, for medium-duty carrying capacities. Resistant to temperatures between -30°C and +130°C, suitable for use on equipment that has to be frequently washed and sterilised, especially in autoclaves. The excellent rolling resistance ensures that minimum effort is needed when manual handling, but only on smooth floors. They are combined with brackets and axle components which are specific for high temperature environments.

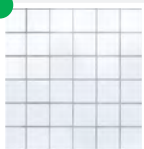
Industries



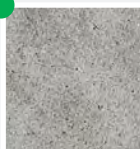
Food Industry

Floor Suitability

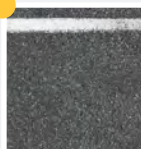
Only suitable on smooth and compact tile and resin-cement flooring. Not suitable in presence of obstacles. They may damage fragile floors. Not recommended on abrasive, unpaved floors or in presence of processing residues.



Tile



Cement-Resin



Asphalt



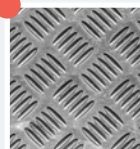
With Chips



With Obstacles



Not Paved



Expanded Metal

SERIES 68FV CONTINUED



80 Shore D



-30°C to +130°C



100 - 125mm



250 - 350kg

WHEELS



Plain Bore

(mm)	(mm)	(mm)	(mm)	(daN)	(kg)	(code)
150	40	20	58	350	0.27	068063
150	40	20	50	350	0.33	068161
160	45	20	58	350	0.27	068254
160	45	20	50	350	0.33	068255



Ball Bearing



SS Ball Bearing

(mm)	(mm)	(mm)	(mm)	(daN)	(daN)	(daN)	(kg)	(code)	(kg)	(code)
100	30	12	45	250	250	250	0.27	683502	0.27	683602
125	30	12	45	350	350	350	0.33	683503	0.33	683603



STANDARD DUTY CASTORS - NL

											SWIVEL		FIXED		BOLT HOLE
100	30	128	100x85	80x60	9	12	73	35	220	0.74	684882	0.63	685182	0.69	688082
125	30	156	100x85	80x60	9	12	73	37	220	0.83	684883	0.72	685183	0.78	688083



STAINLESS STEEL STANDARD DUTY CASTORS - NLX

											SWIVEL		FIXED		BOLT HOLE
100	30	128	100x85	80x60	9	12	73	35	220	0.74	684682	0.63	685682	0.69	685982
125	30	156	100x85	80x60	9	12	73	37	220	0.83	684683	0.72	685683	0.78	685983

For technical help and advice contact

T: 01457 837772 E: sales@aut.co.uk