

SERIES 72GS



80 Shore A



-30°C to +250°C



100mm



80kg

Silicon rubber wheels with aluminium centre

- Red non-marking wheel with significant noise reduction
- Standard duty loads
- Suitable for intermittent use in baking ovens (30 minutes max 250°C, with at least 30 minutes subsequent rest at room temperature)
- Tested in accordance with ISO 22878:2004
- Manufactured in accordance with ISO 22883:2004



Available Bore Types



Ball Bearing

Environments of Use

- Weak Acids
- Strong Acids
- Water
- Alcohol
- Weak Bases
- Strong Bases
- Hydrocarbons
- Solvents

Uses

Suitable for use at temperatures from -30°C up to +250°C. Particularly suitable for intermittent use in baking ovens (maximum permanence at 250°C is of 30 minutes, with subsequent period of resting of at least 30 minutes, at room temperature). They have excellent elasticity features and guarantee an easy overcoming of obstacles on uneven flooring also; compared to high temperature solid wheels, they allow significant noise reduction. They are combined with brackets and axle components specific for high temperatures; all wheels are also fitted with threadguards. Not suitable in the presence of obstacles along the path or on delicate flooring.

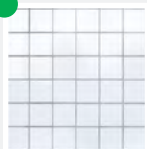
Industries



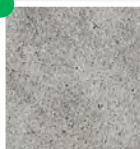
Food Industry

Floor Suitability

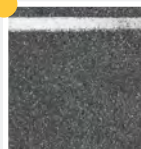
Suitable for use on tiles, resin-cement; not recommended on abrasive, unpaved floors or in the presence of processing residues. Not suitable on delicate floor or with obstacles along the path. They do not mark the floor.



Tile



Cement-Resin



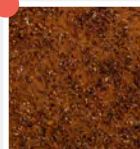
Asphalt



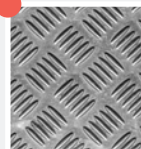
With Chips



With Obstacles



Not Paved



Expanded Metal

SERIES 72GS CONTINUED



80 Shore A



-30°C to +250°C



100mm



80kg

WHEELS



Ball Bearing

250°C

(mm)	(mm)	(mm)	(mm)	(daN)	(daN)	(daN)	(daN)	(daN)	(daN)	(kg)	(code)
100	40	15	40	100	80	80	40	40	40	0.43	722152

STANDARD DUTY CASTORS - NL



250°C

												SWIVEL		FIXED		SWIVEL & BRAKE		BOLT HOLE		BOLT HOLE & BRAKE
100	40	128	100x85	80x60	9	12	35	120	40	80	0.96	724452PF	0.71	726252PF	1.17	727152PF	0.86	727352PF	1.07	727452PF

STAINLESS STEEL STANDARD DUTY CASTORS - NLX



250°C

												SWIVEL		FIXED		SWIVEL & BRAKE		BOLT HOLE		BOLT HOLE & BRAKE
100	40	128	100x85	80x60	9	12	35	120	40	80	0.96	724462PF	0.71	726262PF	1.17	727162PF	0.89	727362PF	1.07	727462PF

*Stainless steel ball bearing wheel available on request

For technical help and advice contact

T: 01457 837772 E: sales@aut.co.uk