

SERIES 78



60 Shore D



-15°C to +80°C



82mm



450 - 750kg

Injected polyurethane tyre bonded to nylon centre load roller

- Red coloured injected polyurethane roller, moulded over a polyamide 6 centre
- Manual transpallets only
- Manual handling applications
- Tested in accordance with ISO 22878:2004
- Manufactured in accordance with ISO 22883:2004



Available Bore Types



Ball Bearing



Ball Bearing Facility

Environments of Use

- Weak Acids
- Strong Acids
- Water
- Alcohol
- Weak Bases
- Strong Bases
- Hydrocarbons
- Solvents

Uses

Suitable for use on manual pallet trucks, also with humidity and highly aggressive chemical agents. Their excellent values of rolling resistance make the manual handling of heavy loads easier. It is specifically recommended for use in the food and canning industries.

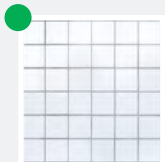
Industries



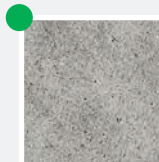
Pallet Trucks

Floor Suitability

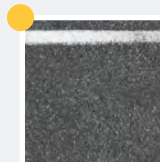
Suitable for tiles and cement-resin. Not suitable if voluminous obstacles are present.



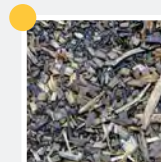
Tile



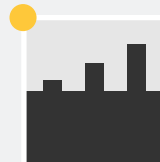
Cement-Resin



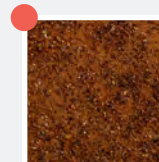
Asphalt



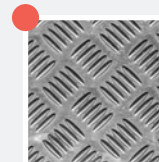
With Chips



With Obstacles



Not Paved



Expanded Metal

For technical help and advice contact

T: 01457 837772 E: sales@aut.co.uk

SERIES 78 CONTINUED



60 Shore D



-15°C to +80°C



82mm



450 - 750kg

LOAD ROLLERS



Ball Bearing



Ball Bearing Facility

(mm)	(mm)	(mm)	(mm)	(mm)	(mm)	(daN)	(daN)	(daN)	(kg)	(code)	(kg)	(code)
82	60	20	60	47	14	450	390	450	0.47	782101	0.27	784101
82	70	20	70	47	14	500	410	500	0.53	782102	0.32	784102
82	80	20	80	47	14	600	500	600	0.59	782103	0.38	784103
82	90	20	90	47	14	700	525	700	0.64	782104	0.43	784104
82	100	20	100	47	14	750	530	750	0.69	782105	0.49	784105

OPTIONS AVAILABLE TO ORDER

