

SERIES ATS



95 Shore A



-20°C to +60°C



50 - 125mm



50 - 100kg

Grey TPR tyred apparatus wheels and castors, **stainless steel** housings

- Polypropylene light grey wheel centre with thermoplastic rubber dark grey tread
- Pressed **stainless steel** castor body
- Plain bearing with or without threadguards. Single ball bearing has plastic threadguards
- Ideal for use in manual handling, medical centres and the hotel industry



Available Bore Types



Plain Bore



SS Ball Bearing

Environments of Use

- Weak Acids
- Strong Acids
- Water
- Alcohol
- Weak Bases
- Strong Bases
- Hydrocarbons
- Solvents

Uses

Suitable for use on different types of trolleys within the furniture and institutional sector. They can also be used on fragile floors and in presence of small obstacles. Example of recommended applications: shop display units and windows, low carrying capacity tool trolleys, supermarket trolleys.

Industries



Clean Room Laboratories



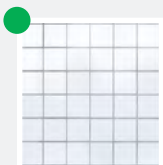
Food Industry



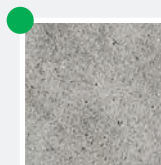
Medical

Floor Suitability

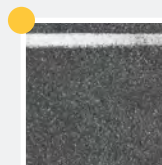
Suitable on tiles and resin-cement; not recommended on abrasive, unpaved floors or in presence of processing residues. They do not damage floors and are also suitable in the presence of small obstacles.



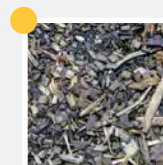
Tile



Cement-Resin



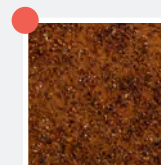
Asphalt



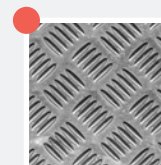
With Chips



With Obstacles



Not Paved



Expanded Metal

SERIES **ATS** CONTINUED



95 Shore A



-20°C to +60°C



50 - 125mm



50 - 100kg

WHEELS



Plain Bore



SS Ball Bearing

(mm)	(mm)	(mm)	(mm)	(daN)	(code)	(code)
50	6	22	19	50	ATS050P1021	ATS050B1021
75	6	28	25	75	ATS075P1021	ATS075B1021



Plain Bore

(mm)	(mm)	(mm)	(mm)	(daN)	(code)
80	8	36	32	80	ATS080P1021
100	8	36	32	100	ATS100P1021
125	8	36	32	100	ATS125P1021

TOP PLATE CASTORS



										SWIVEL	FIXED	SWIVEL & BRAKE
										ATA050P2S21	ATA050P3S21	ATA050P4S21
	50	19	70	60x60	48/39x48/39	6.3	25	80	50	ATA075P2S21	ATA075P3S21	ATA050P4S21
										ATA050B2S21	ATA050B3S21	ATA050P4S21
	50	19	70	60x60	48/39x48/39	6.3	25	80	50	ATA075B2S21	ATA075B3S21	ATA075B4S21

For technical help and advice contact

T: 01457 837772 E: sales@aut.co.uk

SERIES **ATS** CONTINUED



95 Shore A



-20°C to +60°C



50 - 125mm



50 - 100kg

BOLT HOLE CASTORS



									BOLT HOLE	BOLT HOLE & BRAKE
	50	19	70	25	11	80	50	50	ATS050P5S21	ATS050P6S21
	75	25	100	25	11	80	75	75	ATS075P5S21	ATS075P6S21
	50	19	70	25	11	80	50	50	ATS050B5S21	ATS050B6S21
	75	25	100	25	11	80	75	75	ATS075B5S21	ATS075B6S21

TOP PLATE CASTORS



									SWIVEL	FIXED	SWIVEL & BRAKE
	80	32	111	77x67	61.5/56x51.5/46.5	8.5	37	80	ATS080P2S21	ATS080P3S21	ATS080P4S21
	100	32	135	77x67	61.5/56x51.5/46.5	8.5	37	100	ATS100P2S21	ATS100P3S21	ATS100P4S21
	125	32	160	77x67	61.5/56x51.5/46.5	8.5	40	100	ATS125P2S21	ATS125P3S21	ATS125P4S21
	125	32	160	95x70	75x50	11	40	100	ATS125P2S31	ATS125P3S31	ATS125P4S31

BOLT HOLE CASTORS



								BOLT HOLE	BOLT HOLE & BRAKE
	80	32	111	36 / 37	13	108	80	ATS080P5S21	ATS080P6S21
	100	32	135	36 / 37	13	108	100	ATS100P5S21	ATS100P6S21
	125	32	160	36 / 40	13	108	100	ATS125P5S21	ATS125P6S21